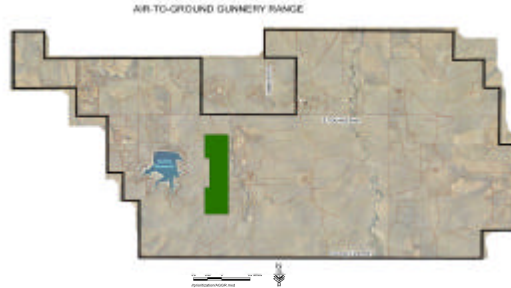


## Air-to-Ground Gunnery Range (AG Gunnery Range) Prioritization Scorecard

**Description:** Historical accounts of the AG Gunnery Range indicate that it was used as a bombing and gunnery range during World War II.

**Location:** The AG Gunnery Range is located on Colorado State Land Board (SLB) property along the ridgeline immediately west of Coal Creek (in Sections 14,23 & 26, T5SR65W). The Gunnery Range is about 1 mile south of East Quincy Avenue and runs 1.5 miles north-south by ¾ mile east-west. The Mortar Range roughly bounds the AG Gunnery Range to the north, and the 20mm Range Fan bounds it to the west.



**Estimated Extent of Area:** The AG Gunnery Range is approximately 1,260 acres in size.

**Clearance Resource Estimate:** 26 workweeks

**Clearance Considerations:** The AG Gunnery Range has relatively good access year-round, however large rainstorms and/or snowstorms can limit access to the site.

### Air-to-Ground Gunnery Range Prioritization Scoring

Criteria	Infrastructure	Overall Hazard	Type of Hazard	Land Use	Environmental Impacts	Cost	Access	Economic Impacts	Legal Restrictions	Total Score
<b>Weighting</b>	<b>0.179</b>	<b>0.152</b>	<b>0.145</b>	<b>0.138</b>	<b>0.131</b>	<b>0.083</b>	<b>0.069</b>	<b>0.055</b>	<b>0.048</b>	
<b>Score</b>	<b>75</b>	<b>50</b>	<b>25</b>	<b>75</b>	<b>100</b>	<b>25</b>	<b>25</b>	<b>50</b>	<b>50</b>	<b>57.1</b>
<b>Priority Factor</b>	<b>13.425</b>	<b>7.600</b>	<b>3.625</b>	<b>10.350</b>	<b>13.100</b>	<b>2.075</b>	<b>1.725</b>	<b>2.750</b>	<b>2.400</b>	

## **Air-to-Ground Gunnery Range (AG Gunnery Range) Prioritization Criteria**

---

**Infrastructure: [75]** Water pipelines and electrical utilities are being constructed across the AG Gunnery Range. There are several along section lines in the area. Several surface water storage reservoirs are planned for drainage in the AG Gunnery Range area. The north-south ridgeline along the Gunnery Range is a potential transportation corridor for future development in the area. If developed, road and utility alignments may be sited in this area. Two Rangeview reservoirs and a City of Aurora reservoir are proposed in the AG range area.

**Overall Hazard: [50]** Live ordnance hazards have been confirmed on the surface and subsurface of the AG Gunnery Range. Test grids in the AG Gunnery Range area have also been cleared. Ordnance hazards include photoflash bombs, 37mm projectiles, 75mm projectiles, fuzes, igniters, white phosphorus (WP) burster, rockets, and mortars. The overall hazard for the AG Gunnery Range is considered moderate, based on the types of hazards confirmed at the site, remote location, and their low potential to cause injury. The area is currently used for cattle grazing. Likely people to be exposed to ordnance hazards include the cattle rancher, surface recreational users, and workers from adjacent utility projects. A State youth detention campus is located 3 miles north of the AG Gunnery Range along Coal Creek. The Cherry Creek School District is constructing high school and middle school campuses approximately 4 miles west of the AG Gunnery Range. The schools were scheduled to open in 2003-2004. Arapahoe County is planning county fair grounds and a regional high school sports complex 3 miles to the northwest of the AG Gunnery Range.

**Type of Hazard: [25]** Ordnance hazards identified at the AG Gunnery Range include 40mm photoflash bombs, 37mm and 75mm projectiles, fuzes, igniters, 2.25-inch and 2.75-inch rockets, and 60mm mortars. Photoflash bombs are extremely hazardous; they contain millions of candlepower charge and burn at extremely high temperatures. They could cause severe burns to exposed individuals. Fragments from spent 37mm high explosive (HE) projectiles, 75mm HE projectiles, and 60mm HE mortars have been recovered from the site. It is possible that additional HE live rounds remain at the AG Gunnery Range. If mishandled, the 37mm projectile, 75mm projectile, and 60mm mortars are very hazardous and capable of significant harm. The 37mm projectiles and 60mm mortars are relatively small. Fuzes and igniters can be very sensitive/volatile; uncontrolled exposure is very hazardous. In addition, several 75mm shrapnel rounds have been recovered from the surface of the AG Gunnery Range. The fuze on the 75mm shrapnel round is relatively stable and requires significant mishandling to detonate. These ordnance hazards are spread over 1,200 acres and the munitions described require substantial mis-handling and abuse to pose a significant hazard. For these reasons, the type of hazard rating is low for this site.

**Land Use: [75]** Current land use at the AG Gunnery Range is primarily cattle grazing. A corral and stock tank are located in the AG Gunnery Range. Sand and gravel mining operations are ongoing in the Coal Creek drainage to the east of the area. The Colorado State Land Board (SLB) owns the AG Gunnery Range property and also owns approximately 37 square miles on the FLBGR. The SLB released Development and Conservation Requests for Proposals (RFPs) in 2005 and proposals were due April 2006. Subsequent contracts that are awarded under these RFPs may affect land use and development at the AG Gunnery Range area.

**Environmental Impacts: [100]** The site is currently short-grass prairie used for cattle grazing. There are three historic/cultural/archeological sites located on the AG Gunnery Range area. The southern half of the range is identified as pronghorn antelope habitat. There is a prairie dog colony to the southeast of the target that is not expected to be impacted by the cleanup. Large areas of prairie grass may be disturbed during clearance. Noxious weeds will be controlled by careful reclamation of clearance areas. Clearance actions are not expected to impact the riparian habitat.

**Cost: [25]** The estimated cost to complete the clearance of the AG Gunnery Range is approximately \$14.3 million. The percent complete is 0%.

**Access: [25]** The AG Gunnery Range is approximately 1 mile south of East Quincy Avenue and may be accessed via a dirt road from East Quincy Avenue. Dirt roads run along the perimeter of the AG Gunnery Range and along the ridge through the middle of the site. The AG Gunnery Range is not easily accessed and is controlled by barbed wire cattle fence, no-trespassing signs, and locked gates. Significant land uses adjacent to the AG Gunnery Range includes recreation at the Aurora Reservoir 1 mile to the west, and mining along Coal Creek. In addition, significant residential developments are planned approximately 1¼ mile to the southwest.

**Economic Impacts: [50]** This site is publicly owned by the people of the state of Colorado. The SLB and people of Colorado could incur economic impacts resulting from delays in the development of this site.

**Legal Restrictions: [50]** The AG Gunnery Range property is owned by the SLB and, as addressed above, is included in the SLB Stewardship Trust program. As a government agency the SLB has a greater ability to

implement legally enforceable restrictions or institutional controls on its property. Therefore the SLB can control, to some extent, the timing of development over the site.